

ADERA

THE
CRAFTSMANSHIP
IS RECOGNIZED IN
THE DETAILS THAT
ARE NOT SEEN.

Plasters, mortars, skimming





TABLE OF CONTENTS

■ PLASTER' STORY	5
■ ADERA STRATO - SPRAY PLASTER SYSTEM	6
■ PLASTERS FOR CONSTRUCTION	10
■ GYPSUM BASED PLASTERS	
Spray plasters	16
Manual plasters	22
Primers	26
■ SKIMMING	
Levelling skimming	28
Finishing skimming	32
■ COMPOUNDS FOR PLASTERBOARDS	42
■ SERVICES	50
■ COMMERCIAL AND TECHNICAL TEAM	51

THE CRAFTSMANSHIP IS RECOGNIZED
IN THE DETAILS THAT ARE NOT SEEN



ADERA

Plasters, mortars, skimming

STORY OF THE PLASTER

Once upon a time... about 200 million years ago, there were some marine and lacustrine basins out of which, in time, natural gypsum deposits were formed (through the precipitation of calcium sulphate from water). After another several millions of years, as gypsum is a very friendly material, people started to use it as raw material to produce plaster - a warm and mouldable material from which durable and also beautiful interiors may be obtained, if we think about the unique decor elements of many impressive historic buildings.

The words gypsum and plaster have their origin in Greek, coming from the word "gipsos".

The story began in the 1880s within the quarries and plaster factory now owned by Siniat in Aghireş locality (near the City of Cluj), where an Austrian citizen founded the first plaster factory in Romania.

The gypsum necessary for plaster production was manually extracted from the quarries located at about 10 km from the factory in Aghireş. The plaster was traded mostly in Hungary and Transylvania, being used in constructions, but also for decorations and indoor ornaments.

The story went on, and the gypsum industrial exploitation began after World War II, and then the factory was nationalized. The production capacity increased over the years and the production diversification started for new areas of use. In 1997, already as part of Romcim Group along with the cement plants, the factory in Aghireş was acquired by Lafarge Group.

In 2012, as part of the plaster division of Lafarge, the factory was taken over by the Belgian Group Etex, along with the gypsum board factory in Bucharest.

At present, we are proud to say that our factory is part of Siniat Romania, together with the gypsum board factory in the City of Bucharest and the future factory in Turceni, and Siniat is a very important part of Etex Group at European level.





PLASTER COATING SYSTEM

ADERA Strato

Plaster mortar for interior
uses with mechanical or manual application

PRODUCT DESCRIPTION

ADERA STRATO is a pre-mixed mortar based on gypsum, mineral fillers and additives.

The advantages of using **ADERA STRATO** plaster coating:

- ▶ a single layer - it ensures a single homogeneous layer, uniform throughout the system thickness and it avoids the numerous risks which may occur when using successive multiple layers of materials, such as:
 - a. incompatibility of the layers - depending on the chemical composition of each type of material (primer, plastering, whitewash, levelling render, finishing plaster coat), which may lead to exfoliations and peel-offs from the contact surface in time
 - b. errors in tracking the drying and curing time of each strip of material to apply the successive layer intended for finishing.
 - c. human error in applying another type of material for each operation
- ▶ due to the reduced consumption of material, namely 8 kg/m^2 , which is representative for **ADERA STRATO**, recognized for its superior coating capacity, it provides:
 - a. low cost of the finished surface; a 25 kg bag can be used to finish approximately 3.15 m^2 of wall masonry in a thickness of 1 cm - compared to a conventional plastering which for the same thickness presents a double consumption of material, implicitly a coating of up to 1.75 square meters for the same quantity of material.
 - b. it directly influences the logistics and building site organization, providing a halving of the stocks and of the handling time required for the same building site.
- ▶ flexibility in application, providing a wide range of application between 7 and 40 mm per layer, compared to a traditional plastering, thus avoiding the additional loading of the wall on the flat areas; as Adera Strato has a fine particle size, it may be applied in a layer of minimum 7 mm, and because of its consistency and low shrinkage, the maximum layer is 40 mm.
- ▶ optimal working time, the bucket time is between 45 and 60 minutes, and the processing time on the support is up to 120 minutes.
- ▶ superior workability starting with the easy levelling with the levelling board (1-2 moves being required to obtain the flatness), continuing with the scraping phase, where the paste may be clogged so it cannot be smoothed with the levelling board or the lamellar spatula, and ending with the finishing phase where a ready-for-paint smooth glassy surface is obtained due to the ideal particle size.
- ▶ thermoinsulating role
 - a. due to the low density of $850 \text{ kg/cubic meter}$, resulted from the porous dimensional structure of the product, where the heat losses are considerably reduced by $\lambda=0.26$.
 - b. surface feels comfortable to human touch
- ▶ low resistance to water vapor diffusion, allowing a proper breathing of the walls as it is a hygroscopic material with a good capacity for humidity regulation in a room.

RECOMMENDATION

A thickness higher than 10 mm is not recommended on normal/smooth ceilings. For higher thicknesses mechanical anchorage it will be used.

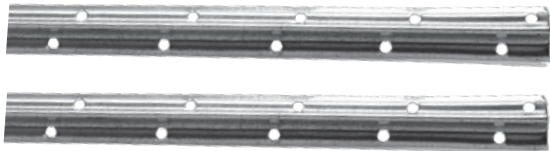
In case of bathroom and kitchen applications, under the ceramic tiles, the following must be observed:

- ▶ before the plastering, on the surface will be applied the **Adera BetoPrimer** primer
- ▶ the thickness of application: minim 1 cm
- ▶ it should not finish the surface (only the leveling step is required) , a trowel with teeth could be used.
- ▶ before the ceramic tiles application, the plaster has to be dried and a waterproofing material could be applied
- ▶ the joints between the tiles and on the top of the last layer of the tiles it should be correctly executed, to avoid water infiltrations
- ▶ the distance between metal profiles should be 1.40 - 1.70 m (as the profiles are placed at a smaller distance one from the other, will get a better flatness)

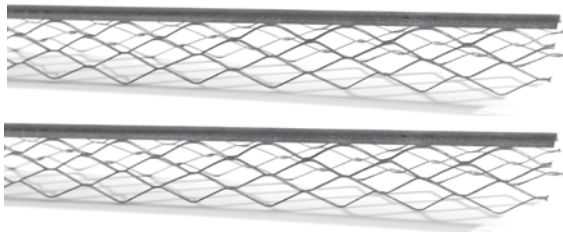
PLASTERING PHASES

1. Preparation of the support surface

- ▶ Before the application of **Adera Strato** gypsum based plaster, the support surface is cleaned of dust. The support must be stable and free of oil and grease stains
- ▶ The environment and support surface temperature must not be under 5 °C, respectively not over 30 °C. **Adera Primer Universal** primer is applied in advance for surfaces with high absorption, and **Adera BetoPrimer** primer will be used for concrete surfaces and non-absorbent surfaces
- ▶ The wall is marked by using the profiles W6 or W10; the marking is made by **Adera Strato** plastering, 24 hours before the plastering itself



- ▶ The distance between profiles should not exceed the length of the H or trapezoidal levelling board used to level the mortar applied on the wall
- ▶ Plastering corners will be used on the external corners



2. Preparation of the material

2.1 Manual preparation

- ▶ A quantity of 17 liters of clean water is poured in a clean container with the capacity of 50-60 liters, over which a 25 kg bag of **Adera Strato** is sprinkled.
- ▶ It is allowed for 30 seconds in order for the powder to impregnate with water, then it is mixed with the mixer at low rotation speed (do not prepare in the concrete mixer!) until a homogeneous paste is obtained. If the resulting paste is too stiff, add water until optimal consistency is obtained, but never add powder in the paste because it accelerates the setting time and renders the homogenization difficult

2.2 Mechanic preparation

- ▶ After turning on the plastering machine, the water flow rate is regulated depending on the material and the desired consistency for the paste.
- ▶ Material is added in the machine container, and the mixture will be automatically made



3. Material application on the support

- ▶ The plastering application may be performed with the plastering machine or by using the jointer, spatula, trowel or the ladle
- ▶ It is very important to use only clean utensils, because the impurities and debris on them may shorten the working time, and may lead to variations in the plastering quality
- ▶ The plaster is applied between the plastering profiles marked 24 hours before the plastering

- ▶ In case of mechanical application, the equipment manufacturer specifications will be met
- ▶ In case of mechanical application, it is very important that during the rest period of the plastering machine, the paste should not remain inside the hose for more than 30 minutes



4. Levelling of the plastering

- ▶ After loading the plaster on the wall, it will be levelled by using the H or trapezoidal levelling board. Thus, the required amount of mortar is spread on the entire surface



- ▶ The W6/W10 profiles are removed after this operation and the air pockets will be filled with mortar

5. Plastering scraping

- ▶ After approximately 60 minutes after the plastering levelling, the entire plastered surface will be scraped by using the lamellar spatula or the trapezoidal levelling board



- ▶ The paste obtained from the scraping will be used for filling any air pockets or imperfections

6. Plastering finishing

- ▶ The plastering finishing has two phases:
 - SMOOTHING WITH THE SPONGE SMOOTHING BOARD**
- ▶ After approximately 30-45 minutes after the scraping, when the plastering begins to harden, the plastered surface will be troweled roundly by using the sponge smoothing board soaked in water



b. FINISHING WITH THE LAMELLAR SPATULA

- ▶ The paste obtained by the plastering troweling is very fine and will be used for the plastering finishing. The lamellar spatula or the big trowel will be used to ensure the flatness of the surface
- ▶ The troweling and finishing may be repeated if necessary in order to obtain a ready-to-paint surface
- ▶ After drying (approximately 48-96 hours) the washable paint may be applied, (optionally, for performing superior quality finishings, a layer of **ADERA LISS** finishing plaster coat or ready-mix **NIDA Pro** polishing plaster coat may be applied
- ▶ The time periods indicated in the stages description are indicative and depend greatly on factors as the support and environment temperature, air humidity and the ventilation in the rooms



By using **ADERA STRATO** gypsum based plaster, **significant cost savings** are obtained compared to the cement based plastering.



ADERA Basic

Plaster for construction

Adera Basic is a white powdered gypsum, with hemihydrate calcium sulphate as main component. A homogeneous paste is formed by sprinkling into water, with an optimal setting time and ideal workability. A resistant and durable surface is obtained after drying.

AREAS OF USE

- ▶ Laying and durable fixing of embedded supports and electric installations
- ▶ Preliminary leveling and repairs of support surfaces inside buildings

PERFORMANCES

Interior use

Manual application

Fast working time

11 minutes



BENEFITS



EASY TO
APPLY



HIGH MECHANICAL
STRENGTH



FINAL SURFACE
WITHOUT CRACKS



PREPARATION



WITHOUT
MIXING



APPLICATION

PROCEDURE

PREPARATION

- ▶ Using a clean container, add the water and then sprinkle the plaster evenly on the entire water surface
- ▶ Allow 2-3 minutes for the plaster to get soaked with water to obtain good working consistency (if mixed, the working time is reduced by up to 30%)
- ▶ As it is a quick-setting plaster, it should be prepared in small quantities in order to prevent any losses

APPLICATION

Apply the paste thus obtained using the trowel or spatula; a thick layer may be applied





ADERA Stucco

Modelling plaster

Adera Stucco is a white very fine powdered plaster, with hemihydrate calcium sulphate as main component. The product is obtained from a properly selected raw material.

A homogeneous paste is formed by sprinkling into water, with optimal setting time and ideal workability. After drying, the obtained surface will be resistant and durable.

AREAS OF USE

- ▶ Casting of moulds, ornaments, stuccos used as indoor decorations: soffits, friezes, galleries, baguettes, angles, ceiling fittings, columns, gables etc.
- ▶ The material is also suitable for finishing indoor plastering coatings based on cement, cement-lime, plaster as first hand render

PERFORMANCES

Interior use

Manual application

Fast working time

12 minutes



BENEFITS



EASY TO PREPARE
AND APPLY



VERY GOOD
WORKABILITY



HIGH MECHANICAL
STRENGTH



PREPARATION



WITHOUT
MIXING



APPLICATION

PROCEDURE

PREPARATION

- ▶ Using a clean container, add the water and then sprinkle the plaster evenly on the entire water surface
- ▶ Allow 2-3 minutes for the plaster to get soaked with water to obtain good working consistency (if mixed, the working time
- ▶ If mixed, the working time is reduced by up to 30%
- ▶ The paste should be mixed only when used to cast moulds, ornaments and stuccos

APPLICATION

- ▶ Pour the plaster paste in ready-made moulds, made of fiberglass or rubber in various shapes. Grease the mould with a solution to remove plaster adhesion to the mould wall and facilitate formwork removal. Pour the first layer of prepared plaster paste into the mould. This layer will cover half of the final thickness of the mould. Reinforcement fiber may be introduced in the remaining paste
- ▶ Pour the reinforced paste thus obtained in the mould and fill the second half. Allow to rest until the setting ends. Remove the formwork, fix and store the elements for drying after the setting ends. The obtained forms, ornaments and stuccos have an increased mechanical strength
- ▶ The quality of the forms, ornaments and stuccos depends on the processing degree. In order to execute the wall finishing, apply the obtained paste in thin layers, using the trowel, until white smooth and flat surfaces are obtained





ADERA Optim

Multi purpose plaster

Do you want to glue something?
 Glue with Adera Optim: aerated concrete blocks, polystyrene, cans, plasterboards, window sills, ornaments, plaster corners, mesh.

ADERA OPTIM is an additive reinforced gypsum, characterized by increased adhesion and plasticity. When mixed with water, a homogeneous paste is obtained with extended working time and possibility of flatness correction.

AREAS OF USE

- ▶ Execution of embrasures, window boards
- ▶ Fastening of electric installations, plaster angles
- ▶ Heavy loading and repairs
- ▶ Leveling/plastering on small areas
- ▶ Bonding of insulating panels
- ▶ Bonding of gypsum ornamental items and gypsum items for ceilings
- ▶ Fastening of angles to windows and doors

PERFORMANCES

Interior use	Manual application
Fast working time	45 minutes



BENEFITS



AVOIDANCE OF CRACKING RISK



ADVANCED RESISTANCE



EXCELLENT ADHESION



PREPARATION



MIXING



APPLICATION

PROCEDURE

PREPARATION

- ▶ Clean containers and tools will be used for paste preparation
- ▶ Powder will be added in water by layering, never inversely
- ▶ The metal elements to be incorporated will be protected against corrosion

APPLICATION

- ▶ The material will be applied on loadbearing surfaces which are stable, dry and well cleaned, without loose areas or exfoliations
- ▶ A stainless steel trowel will be used on the application
- ▶ ADERA BetoPrimer primer will be used for glossy surfaces (concrete type) and ADERA Primer Universal primer will be used for very absorbent surfaces
- ▶ The material will be used at temperatures above 5°C

Did you know that?

Gypsum has been used since antiquity for decoration interiors?



Did you know that?

The gypsum is a "GREEN" product?

GREEN
City



Did you know that?

The gypsum is a natural and people friendly product.





ADERA Strato

Plaster mortar for interior uses with mechanical or manual application

Adera Strato is a plaster-based monolayer mortar, for interior uses, with mechanical or manual application. It is pre-dosed with special additives and perlite so as to form a durable base for wall finishing, with low material consumption. Combined with water, it forms a homogenous paste with extended working time, and a render-like finishing surface of a special ready to paint white.

AREAS OF USE

- ▶ It is used for interior plasters applied on brick, AAC and concrete.
- ▶ It can also be used for old and damaged plaster repairs.
- ▶ The support surface must be dry, clean, without oil stains, efflorescence or friable areas.
- ▶ The applied plaster should be protected from frost, direct exposure to sun rays and strong wind.

PERFORMANCES

Layer thickness	7 - 40 mm
Specific consumption	8 kg/m ² /cm
Extended working time	120 minutes



BENEFITS



GOOD THERMAL AND SOUND INSULATOR
INCREASE THE LIFE QUALITY



MECHANICAL OR MANUAL APPLICATION



FINISHING PLASTER



REGULATES THE MOISTURE IN THE ROOM
- THE WALL BREATHES



PREPARATION



APPLICATION



FINISHING

WORKING METHOD

For highly absorbent surfaces, Adera Primer Universal should be applied, to reduce the water absorption. For concrete surfaces, apply Adera BetoPrimer to increase the plaster adherence to the support. The drying time of the primer should be respected: minimum 120 minutes. To obtain a flat surface, initially, fix the metal marks (corrosion resistant T profiles) with pats made of Adera Strato, every 1.4-1.7 m. For outer corners, corrosion resistant corner profiles shall be mounted and fixed with Adera Strato.

MIXING

Mechanical application:

- ▶ Before application, the plastering machine shall be connected to water and electricity network. After the machine has been put into operation, adjust the consistency of the material before application

Manual application:

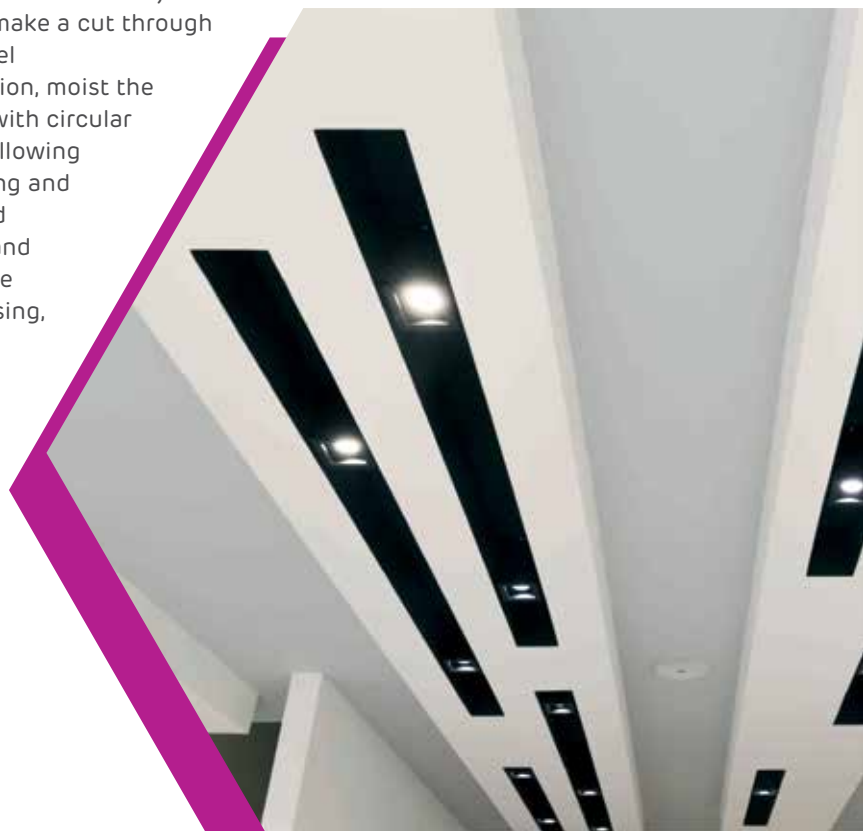
- ▶ Always pour powder into water and not vice versa; the necessary quantity of water for a 25 kg bag is 17 l
- ▶ Mix a large quantity in recipients to obtain a homogenous paste, with suitable consistency, for efficient productivity

APPLICATION

- ▶ Apply on the support, with the plastering machine, on larger surfaces or manually, using a trowel, on small surfaces
- ▶ After several minutes from application, use a level for levelling the plaster. After approximately 45-60 minutes from application, before hardening, corrections can be made on uneven areas, by scrapping/cutting with the level. At the joint between walls or between walls and ceilings, make a cut through the entire thickness of the plaster with a trowel
- ▶ After approximately 120 minutes from application, moist the plaster and make it even with a sponge float, with circular movements until a creamy paste is obtained, allowing the rendering. This paste is useful for correcting and finishing the surface. If a perfectly smooth and flat surface is desired, repeat the moistening and rendering operation, and the final quality of the surface is obtained from the degree of processing, the whiteness of the material and its superior smoothness



See the presentation movies of our products on **Siniat Romania** youtube channel



PRODUCT FOR
PROJECTS
AVAILABLE ONLY
ON ORDER



ADERA Strato P

Plaster mortar

ADERA Strato P is a plaster-based monolayer mortar, for interior uses, with mechanical or manual application. Combined with water, it forms a homogenous paste with extended working time, easy to apply and prepare with excellent plasticity and increased productivity. The product is ideal for ready to paint interior finishings; applying it saves additional material (minimum 1 layer of plaster) and the specific labour.

AREAS OF USE

- ▶ Adera Strato P is used for interior plasters applied on brick, AAC and concrete
- ▶ Provides fire barrier for the coated wall

PERFORMANCES

Layer thickness	6 - 40 mm
Specific consumption	8 kg/m ² /cm
Extended working time	100 - 130 minutes



BENEFITS



GOOD THERMAL AND
SOUND INSULATOR
INCREASE THE LIFE
QUALITY



READY TO PAINT
FINISHING
PLASTER



GOOD ADHERENCE
TO THE SUPPORT



REGULATES THE
MOISTURE IN THE ROOM
- THE WALL BREATHES



PREPARATION



MECHANICAL
APPLICATION



FINISHING

WORKING METHOD

- ▶ The temperature of the working environment is minimum 5°C, including the support layer
- ▶ Do not apply on overheated or frozen surfaces
- ▶ It is recommended to use the product only in interior spaces, with less than 60% humidity
- ▶ For highly absorbent surfaces, Adera Primer Universal should be priorly applied, for reduced water absorption
- ▶ For concrete surfaces, apply Adera BetoPrimer, for an increased adherence of the mortar to the support. Observe the primer drying time of 120 minutes. To obtain a flat surface, initially, fix the metal marks (corrosion resistant T profiles) with pats made of Adera Strato P, every 1.5-2m. For outer corners, corrosion resistant corner profiles shall be mounted and fixed with Adera Strato P

MIXING

Before application, the plastering machine shall be connected to water and electricity network. After the machine has been put into operation, adjust the consistency of the material before application

APPLICATION

- ▶ Apply on the support, with the plastering machine, on larger surfaces or manually, using a trowel, on small surfaces
- ▶ After several minutes from application, use a level for levelling the plaster
- ▶ After approximately 45-60 minutes from application, before hardening, corrections can be made on uneven areas, by scrapping/cutting with the level
- ▶ At the joint between walls or between walls and ceilings, make a cut through the entire thickness of the plaster with a trowel
- ▶ After approximately 120 minutes from application, moist the plaster and make it even with a sponge float, with circular movements until a creamy paste is obtained, allowing the rendering. This paste is useful for correcting and finishing the surface. If a perfectly smooth and flat surface is desired, repeat the moistening and rendering operation, and the final quality of the surface is obtained from the degree of processing, the whiteness of the material and its superior smoothness

FINISHING RECCOMANDATION

Depending on the degree of processing of the Adera Strato P plasters, it can be ready to paint or it can be finished with Adera skimming as follows:

- ▶ If the plaster is applied following all the recommended application levels, the plaster doesn't have to be finished with skimming
- ▶ In case of applying the plaster without insisting on the finishing stage, a final layer of Adera Liss skimming will be applied later, in order to obtain a perfect surface
- ▶ In case of applying the plaster without the rendering stage, a layer of Adera Plano levelling skimming will be applied to obtain a perfect flatness and after that one layer of finishing skimming Adera Liss will be applied to an exceptional finishing





StratoX

Spray Plaster

PRODUCT FOR
PROJECTS
AVAILABLE ONLY
ON ORDER

ADERA Strato X is a gypsum based monolayer plaster, for interior applications, with spray machines. Combined with water, it forms a homogenous paste with extended working time, easy to apply and prepare, with excellent plasticity and increased productivity. The product is ideal for ready to paint interior finishings; it saves additional material (minimum 1 layer of skimming) and the specific labour.

AREAS OF USE

- ▶ Adera StratoX is used for plastering of interior walls made on brick, AAC and concrete

PERFORMANCES

Specific consumption

9.7 kg/m²/cm

Working time

minimum 120 minutes

Fireproof - improves the safety of buildings



BENEFITS



**GOOD THERMAL AND
SOUND INSULATION**
INCREASES THE
QUALITY OF LIFE



EXCELLENT LEVELING
HIGH SPEED OF WORK
ON SITE



THE WALL BREATHES
- CREATES A HEALTHY
ENVIRONMENT



PREPARATION



MECHANICAL
APPLICATION



FINISHING

WORKING METHOD

- ▶ The temperature of the working environment is minimum 5°C, including the support layer. Do not apply on overheated or frozen surfaces
- ▶ It is recommended to use the product only in interior spaces, with less than 60% humidity

For highly absorbent surfaces, **Adera Primer Universal** should be priorly applied, to reduce water absorption.

For concrete surfaces, apply **Adera BetoPrimer**, for to increase adherence of the mortar to the support.

To obtain a flat surface, initially, fix the metal marks (corrosion resistant T profiles) with pats made of **Adera StratoX**, every 1.5-2 m. For outer corners, corrosion resistant corner profiles shall be used and fixed with **Adera StratoX**.

MIXING

- ▶ Before application, the plastering machine shall be connected to water and electricity network. After the machine has been put into operation, adjust the consistency of the material before applicaton.

APPLICATION

- ▶ Apply on the support, with the plastering machine.
- ▶ After several minutes from application, use a level for levelling the plaster
- ▶ At the joint between walls or between walls and ceilings, make a cut through the entire thickness of the plaster with a trowel
- ▶ It is left to rest until the hardening process begins
- ▶ After hardening, the flatness of the plastered surface is checked (with the help of the level)
- ▶ Moist the plaster and make it even with a sponge trowel, with circular movements until a creamy paste is obtained, allowing the rendering. This paste is useful for correcting and finishing the surface
- ▶ The next step is finishing with a trowel until a smooth and flat surface is obtained
- ▶ After drying, the surface thus finished is ready to be primed and painted
- ▶ If the thickness of the plaster exceeds 1 cm when applied to the ceilings, mechanical anchoring is recommended





ADERA FybRO

Plaster mortar reinforced with fibers

ADERA FybRO is a plaster mortar reinforced with fibers. It is applied manually indoors. Combined with water, it forms a homogenous paste with extended working time, easy to apply and prepare.

AREAS OF USE

- ▶ For interior plaster resistant to deformation
- ▶ For renovations
- ▶ At the joint between different types of support (concrete - brick, concrete - ACC, brick - ACC)
- ▶ For ornamental plasters - "Vintage" type

PERFORMANCES

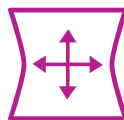
Layer thickness	6 - 40 mm
Specific consumption	8 kg/m ² /cm
Working time	90 minutes



BENEFITS



IN TIME, IT PREVENTS CRACKS



RESISTANT TO DEFORMATION



REPLACE THE MESH FROM FIBER GLASS TAPE



PREPARATION



APPLICATION

ADVANTAGES

- ▶ Good adherence to the support
- ▶ Thermally insulates
- ▶ Regulates the moisture in the room
- ▶ It is non-combustible
- ▶ Fast application - less operations (net no longer applies)
- ▶ Easy homogenization
- ▶ Optimal setting time
- ▶ Possibility of processing as ornamental surface - "Vintage" type

WORKING METHOD

PREGĂTIREA SUPRAFEȚEI:

- ▶ The joints between bricks/aerated concrete, the holes in the walls and some imperfections of the wall will be filled before plastering.
- ▶ On very absorbent surfaces (aerated concrete, bricks, etc) it will be applied a specific primer like **Adera Primer Universal** (the application is detailed in technical data sheet of the primer)
- ▶ On non - absorbent surfaces (concrete type) it will be applied a specific primer like **Adera BetoPrimer** (the application is detailed in technical data sheet of the primer)
- ▶ **ADERA Fybro** it will be applied after the primers are completely dried (24 hours depending on temperature, season, thickness)

PREPARATION

- ▶ Place the water into a tank, then sprinkle the material then mix it to obtain a homogeneous paste
- ▶ Not recommended adding the powder in the paste to avoid reduction of working time

APPLICATION

- ▶ Application on the support is made manually, using trowel, float or ladle. After application the material is leveled with screed or lamellar fillers. Application can be made in one or several successive layers
- ▶ For finishing on wet plaster surface you can apply a layer of plaster leveling Adera Plano or Adera Finna (approx. 2-3 mm)
- ▶ In order to obtain a superfinished surface after drying of the first layer of smoothing plaster may be used to finish plaster coat Adera Liss
- ▶ Work temperature: 5-35°C
- ▶ Humidity < 60%
- ▶ Preparation of the paste: by mixer or manually. Manual application in a single layer and / or in successive layers depending on the desired thickness. In case of multiple layers, the second layer is applied at intervals of approx. 60 minutes

ADDITIONAL APPLICATIONS





Is applied 30-50% faster
(than a wall on which the mesh is mounted)

Impeccable appearance

Prevents cracks

No fiberglass mesh

No leveling plaster

No handywork for installing the mesh or leveling plaster

ADERA FYBRO CUT YOUR COSTS



See the presentation movies of our products on **Siniat Romania** youtube channel



ADERA Primer Universal

PRIMER

Synthetic resin-based primer in white dispersion with high penetration capacity in the support. It contains synthetic resins, water, additives.

AREAS OF USE

- ▶ Priming of the absorbing surfaces on the inside
- ▶ Priming outdoor surfaces to reduce absorption and surface hardening

WORKING METHOD

SUBSTRATE

- ▶ The substrate must be dry, frost-free, resistant, stable and clean - free from dust, debris, oil stains or grease
- ▶ test the support absorption
- ▶ It is applied to the usual mineral substrates in construction: brick, BCA, water, lime-cement plaster, gypsum, plasterboards
- ▶ do not use on plastic, metal, paint coats.

Instructions for substrate preparation

- ▶ The substrate surface is vacuum cleaned and, if necessary, it is sanded or roughened. It is recommended to check the adherence to the support of the coating material.

MIXING

- ▶ depending on the substrate absorption it can be diluted with water up to 1: 2
- ▶ shake the recipient before application

Optional, it can be diluted 1:3, depending on the quality and substrate absorption (it can be tested punctually in each jobsite)

PERFORMANCES

Consumption (depending on the degree of dilution)

dilution 1:1 - 0.1 kg/m²
dilution 1:2 - 0.07 kg/m²

Drying time

minimum 15 minutes





ADERA BetoPrimer

Primer

Ready-made adhesion primer for gypsum plasters when applied to concrete; it is made of organic binders, water, quartz sands and additives.

AREAS OF USE

- ▶ Priming of smooth concrete supports
- ▶ Priming of mineral supports with low absorption before applying gypsum based plasters

PERFORMANCES

Coverage

about 50 m²/bucket

Consumption

about 0,4 kg/m²



BENEFITS



IT IS RECOMMENDED FOR MONOLITHIC SMOOTH CONCRETE, MONOLITHIC CONCRETE CEILINGS OR PREFABRICATED ELEMENTS.



APPLY INDOORS ONLY



MIXING



APPLICATION

WORKING METHOD

- ▶ The surfaces must be dry, frost-free, clean, without efflorescence, loosen parts and traces of separating agent.

APPLICATION

- ▶ The product is slowly mixed in the bucket with the mixer at low speed, the application consistency being optionally adjusted by a small amount of water. Apply using a brush or roller. It is also suitable for mechanical application. Let it dry for at least 12 hours depending on the air temperature and the support. The gypsum plaster can be applied when ADERA BetoPrimer is completely dry, and no longer sticky.
- ▶ The temperature of the substrate, air and material must be above 5 ° C during application and drying time. Low temperatures and high humidity can significantly increase the drying times. In the bucket, the quartz sand deposits must be remixed. When applied, the rules and regulations in force will be observed.

On concrete surfaces with visible humidity (e.g. condensate water) or concrete with a moisture content higher than 4% of weight, plastering is not recommended.

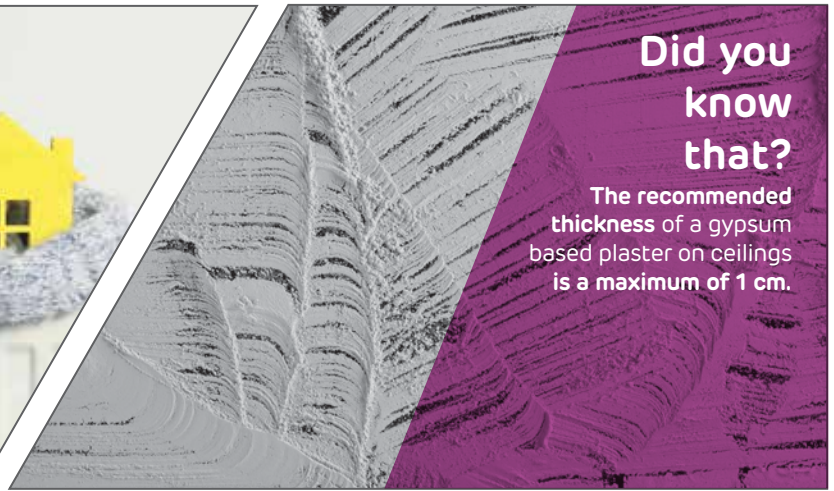
Did you know that?

Do plasters have **thermal insulation** capacity due to the **lower thermal conductivity index** compared to other materials?



Did you know that?

The recommended **thickness** of a gypsum based plaster on ceilings is a maximum of **1 cm**.



Did you know that?

The walls plastered and finished with Siniat gypsum **have a higher noise absorption capacity**?



Did you know that?

Do you have natural gypsum rock on the walls after the plasters and skimming hardening?





ADERA Plano

Levelling plaster

ADERA PLANO is a gypsum based levelling plaster coat, predosed with special additives in order to provide a durable base for walls loading and levelling. When mixed with water, a homogeneous paste is obtained with extended working time and superior workability.

AREAS OF USE

- ▶ Covering, loading, smoothing and leveling of the cement, cement-lime, gypsum plasters, concrete surfaces and/or other compatible surfaces

PERFORMANCES

Layer thickness	1 - 8 mm
Specific consumption	0.8 - 1 kg/m ² /mm
Working time	> 70 de minutes
Manual and mechanical application	



BENEFITS



EASY TO BE APPLIED



EASY POLISHING



OBTAINING OF FLAT SURFACES, READY FOR FINISHING



PREPARATION



MIXING



MANUAL AND
MECHANICAL
APPLICATION

WORKING METHOD

PREPARATION

- ▶ Clean containers and tools will be used for paste preparation
- ▶ Powder will be added in water by layering, never inversely
- ▶ The metal elements to be incorporated will be protected against corrosion

APPLICATION

- ▶ The material will be applied on loadbearing surfaces which are stable, dry, well cleaned and free of oil stains, without loose areas or exfoliations
- ▶ A stainless steel trowel will be used on the application
- ▶ The material will be applied in one layer or in successive layers until a flat surface is obtained
- ▶ Application thickness is 1-8 mm
- ▶ The material will be used at temperatures above 5°C
- ▶ If it is desired to sand the surface, paper granulation 120 - 150 will be used.





A-PI 70

Leveling plaster for manual or mechanical application

PRODUCT FOR
PROJECTS
AVAILABLE ONLY
ON ORDER

A-PI 70 is a leveling plaster for interior with added minerals and additives, for manual or mechanical application.

AREAS OF USE

- ▶ It is used for the leveling or loading of cement plasters, cement-lime and plaster

PERFORMANCES

Specific consumption

0,8 - 1 kg/m²/mm

Working time

minimum 70 minutes

Manual and mechanical application



BENEFITS



EASY TO APPLY
MECHANICAL



EXCELLENT
WORKABILITY



PREPARATION



MIXING



MANUAL AND
MECHANICAL
APPLICATION

WORKING METHOD

- ▶ Apply mechanically or manually, indoors, for the leveling or loading of cement plasters, cement-lime and plaster
- ▶ Apply on clean and dust free surfaces





ADERA Liss

Skimming plaster

Adera Liss is a white color gypsum based plastering coat, predosed with special additives in order to provide a durable base for walls finishing. When mixed with water, a homogeneous paste is obtained with extended working time and superior workability. A glassy uniform smooth final surface is obtained after drying, representing the last finishing layer.

AREAS OF USE

- Ideal for exceptional finishing of plasterboards, of levelling skimming and gypsum based plaster.

PERFORMANCES

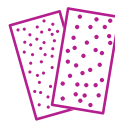
Layer thickness	0 - 1 mm
Specific consumption	0,4 - 0,8 kg/m ² /mm
Working time	90 - 100 minutes
Manual and mechanical application	



BENEFITS



VERY EASY TO APPLY,
OBTAINING OF
HIGH QUALITY FINISHES,
READY FOR PAINTING



EXCELLENT SANDING EVEN
AFTER A LONGER PERIOD
FROM THE APPLICATION



REDUCED
CONSUMPTION OF
MATERIAL



PREPARATION



MIXING



MANUAL AND
MECHANICAL
APPLICATION

WORKING METHOD

PREPARATION

- ▶ Clean containers and tools will be used for paste preparation
- ▶ Powder will be sprinkled over water, never inversely
- ▶ The metal elements to be incorporated will be protected against corrosion

APPLICATION

- ▶ To be applied on stable, dry and well cleaned surfaces
- ▶ A stainless steel trowel will be used on the application
- ▶ The material will be applied in one layer or in successive layers until a flat surface is obtained
- ▶ Application thickness is 0-1 mm
- ▶ 180-220 granulosity emery paper will be used if the surface polishing is wanted
- ▶ The material will be used at temperatures above 5°C





ADERA Finna

2 in 1 skimming,
for finishing and leveling



Adera Finna is a gypsum -based plaster, white, pre-dosed with special additives to form a durable foundation for walls finishing. Combined with water, it forms a smooth slurry with extended working time and superior workability. After drying, a smooth, glassy final surface is obtained, representing the final finishing layer.

AREAS OF USE

- ▶ To load, level and finish various types of surfaces, such as: renders based on cement, cement-lime, plaster, gypsum wallboards
- ▶ Can be applied "wet on wet" reducing thus the final execution time of the project

PERFORMANCES

Layer thickness	1 - 3 mm
Specific consumption	0,5 kg/m ² /mm
Working time	100 minutes



BENEFITS



EASY TO PREPARE
AND APPLY



EXCELLENT
ADHESION TO THE
SURFACE

2 | 1

2 IN 1 SKIMMING
(for finishing and
leveling, depending on
the support surface)



PREPARATION



MIXING



MANUAL AND
MECHANICAL
APPLICATION

WORKING METHOD

PREPARATION

- ▶ Adera Finna gradually disperses in clean water
- ▶ The material is left in the recipient for approx. 3 minutes to provide the necessary time for hydration, then it must be mixed with a mixer or manually, until it has the necessary consistency for use

APPLICATION

- ▶ Depending on the smoothness of the substrate, before plastering the entire surface, cover the prominent surface gaps first
- ▶ The material shall be applied in multiple layers using the trowel, until the surface is smooth and flat
- ▶ The surface can be processed to a superior finishing level, without polishing, by moistening it with a brush and then retouching with the trowel
- ▶ The quality of works depends on the processing degree. Wait until the plastered surface is completely dry, before continuing with other works
- ▶ The drying time depends directly on the humidity, ambient temperature and on-site ventilation conditions



nida Excellence

Self leveling skimming.



Readymix skimming **NIDA EXCELLENCE** is an innovative flowapplied putty, designed for finishing of the interior buildings flat surfaces. It is characterized by a good adhesion to the the surface. After the mechanical application of the product, the surfaces no longer require manual finishing.

AREAS OF USE

- ▶ The product is designed for mechanical application in building interiors (plasterboards, gypsum plasters, leveling skimming). It is characterized by a perfect application and a high degree of white, which is an excellent basis for subsequent painting work.

PERFORMANCES

Specific consumption	1,5 - 2,5 kg/m ² /mm
Optimal thickness per layer	1,0 - 1,5 mm
Maximum thickness per layer	2 mm



BENEFITS



IT DOESN'T NEED
MANUAL FINISHING



LABOR COST
REDUCING



MECHANICAL
APPLICATION



WORKING
TIME SAVE



MECHANICAL APPLICATION

WORKING METHOD

- ▶ **Nida Excellence** is ready for use after opening the package, therefore no water should be added to the product. After opening the bucket, the compound should only be stirred shortly with a slow mixer.
- ▶ The application should be done with high pressure spraying machine with a nozzle no 529. The pressure on the machine should be set on 120 - 130 bar level, to make it possible for the product to pass through the hose (depending on its length). The distance between the surface and the nozzle should be approx. 100 cm and the angle of application should be adjusted to the work performed. The optimal layer thickness should not exceed 2 mm when applied crosswise, which means 1 vertical and 1 horizontal application. The product does not need to be smoothed with a wide trowel, but only left to set and dry. Before painting, the surface can be sanded with 150-180 grade sandpaper.
- ▶ The compound drying time is about 24 hours and depends on temperature and air humidity in the room. Painting of walls is possible only after the compound is completely dry.

SANDING

- ▶ The dry surface should be sanded with abrasive paper at the latest 3-4 days after application. After a longer period the surface will become hard and resistant. The sanding is possible only after the complete drying of the support.

NECESSARY TOOLS

- ▶ The ready to use paste is applied on the surface with a high pressure spraying machine with a nozzle no 529. The pressure on the machine should be set on 120 - 130 bar level.





NIDA Readymix Profesional

Ready to use compound

Nida Readymix Profesional is a ready to use paste, white colour, which is used inside buildings, with manual or mechanical application. It is used for jointing and finishing plasterboards systems, also for complete skimming of mineral surfaces.

AREAS OF USE

- ▶ Plasterboard systems, for obtaining Q3 and Q4 quality level
- ▶ For complete skimming of mineral surfaces
- ▶ Finishes on plasterboard substrates, gypsum based plaster, leveling skimming
- ▶ The resulting perfectly smooth surface is ideal as a substrate for paint, wallpaper and other decorative materials

PERFORMANCES

Consumption for finishing on gypsum based plaster, leveling skimming

aprox. 1,5 kg/m²/mm

Consumption for plasterboards systems, to obtaining Q3 and Q4 quality level

aprox. 0.5 – 0.6 kg/m²/mm

Optimal thickness per layer

between 1,0 and 1,5 mm



BENEFITS



MANUAL AND MECHANICAL APPLICATION. CAN BE APPLIED ALSO WITH THE ROLLER



EASY TO APPLY



SUPER WHITE AND SMOOTH SURFACES ARE OBTAINED, READY TO PAINTING



MANUAL AND
MECHANICAL
APPLICATION



CAN BE APPLIED
ALSO WITH THE
ROLLER

WORKING METHOD

Nida Readymix Profesional is ready for use after opening the package for manual application.

Apply manual or mechanical at an ambient temperature between +5 °C and +25 °C. The paste can be applied using a trowel, a spatula or a roller (for manual application) or by spraying, using an appropriate spray gun for finishing.

Apply the paste only after the prior preparation of the surfaces. The support have to be dry and clean. The drying time of a layer is min. 24 hours (depending on humidity and temperature)

For mechanical application, water should be added in the amount of approx. 0.45 l per 18 kg of product and mixed using a low-speed mixer.

Jointing and finishing plasterboard systems: for Q1 and Q2 quality level is recommended Nida Profesional jointing compound. After drying, apply Nida Readymix Profesional on the entire surface to obtain Q3 or Q4 quality level.

Q1 QUALITY LEVEL: the joints are filled with Nida profesional jointing compound and the entire surface is leveled. The fiber glass tape or paper tape is applied on the joints and after that the tape is covered with Nida profesional jointing compound

Q2 QUALITY LEVEL: Any residue is removed, and after curing, repeat the joint paste coating operation, using the Nida profesional jointing compound, until the joint reaches the same level as the surface of the boards. After drying, the surface may be sanded.

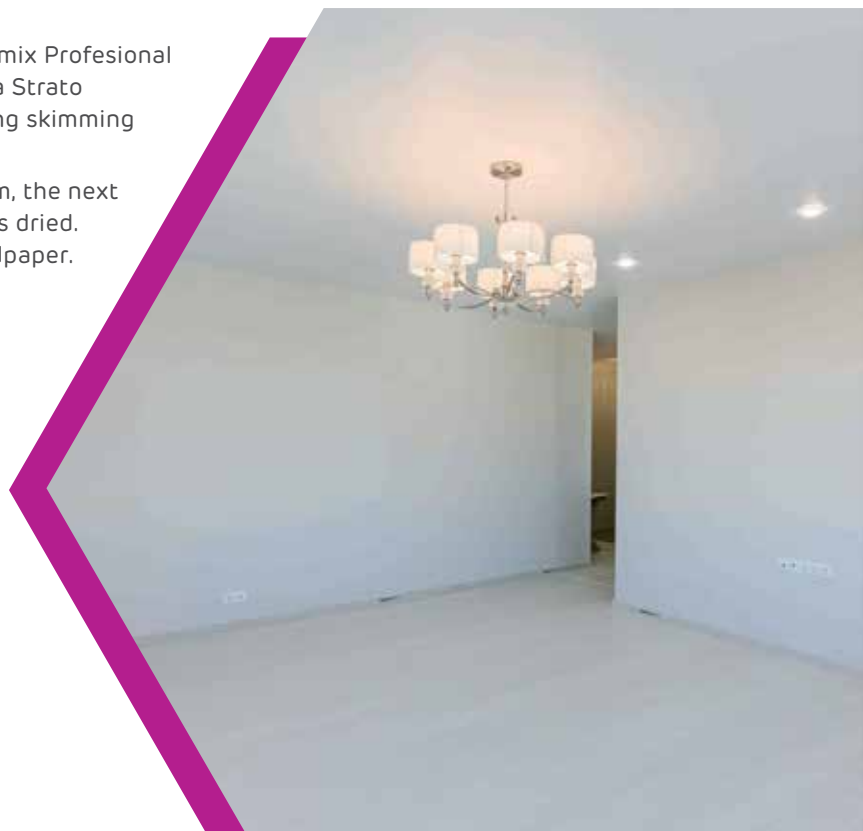
Q3/Q4 QUALITY LEVEL: Any debris from the Q2 finish is removed or sanded. After drying, apply the entire surface Nida Readymix Profesional paste to obtain a Q3 or Q4 quality level.

Mineral surfaces finishing/skimming: Nida Readymix Profesional can be applied manual or mechanical, after Adera Strato gypsum based plaster or after Adera Plano leveling skimming compound.

Optimal thickness of one layer: from 1.0 to 1.5 mm, the next layer should be applied after the previous one has dried. After drying, grind the mass using 180 - 220 sandpaper.

WARNING: The dry surface should be sanded with abrasive paper at the latest 3-4 days after application. After a longer period the surface will become hard and resistant.

Before painting, prime the surface according to the system recommended by the paint manufacturer. The product meets requirements of EN 13963 and has the Polish National Hygiene Institute approval.





FINNTEX

Ready-mix skimming with mechanical application

FinnTex is a ready-mix skimming, white color, for interior buildings use, with mechanical application. It is used for finishing skimming for mineral substrates.

AREAS OF USE

- ▶ Finishing of mineral surfaces such as: gypsum plaster, plasterboards, levelling skimming. The resulting perfectly smooth surface is ideal as a substrate for paint, wallpaper and other decorative materials.

PERFORMANCES

Consumption on 1 m² surface at 1 mm the layer thickness

1,8 kg/m²

Optimal thickness per layer

between 1,0 and 1,5 mm

Maximum thickness per layer

3 mm



BENEFITS



VERY EASY
TO APPLY



SELF LEVELLING
WHEN APPLIED
WITH HIGH
PRESSURE



CAN BE APPLIED
ALSO WITH THE
ROLLER



MECHANIZED APPLICATION



CAN BE APPLIED ALSO WITH THE ROLLER



FINISHING

WORKING METHOD

- ▶ The support surface have to be dry and clean. Before you start working, the support surface have to be cleaned of dust or debris from the previous layers and any type of impurities, which limits adherence. The support must not be wet or frozen.
- ▶ Finntex is ready to use after opening the bag, therefore no water should be added to the product.
- ▶ It is applied mechanical, firstly horizontally and the vertically, at an ambient temperature and of a support surface between 5 °C and 25 °C.
- ▶ The application machine type for self levelling application: spraying machine with a recommended pressure of 120 bars, with a nozzle no 427-430, depending on the type of machine used.
- ▶ The next coat should be applied after the previous one has dried.
- ▶ The product can also be applied with a roller. It is recommended that before application with the roller, the substrate be primed with Adera Universal Primer in a 1: 3 dilution with water. By applying with the roller, the applied surface increases considerably by up to 100%. The product should not be diluted. It is recommended that the product be mixed before application. After application with the roller, it is necessary to level the surface with a trowel.

SANDING

- ▶ Sanding should only be made after the surface has completely dried. The surface can be paint after the complete drying of the product.

Did you know that?

The walls plastered an finished with Siniat products **help us to reduce** the heating and cooling **costs of the room**



Did you know that?

The Siniat skimming are important for interior designers? On the surfaces finished with Siniat skimming, the decoration or the painting project becomes easy, allowing the designers to express their creativity





NIDA Profesional

Jointing plaster

NIDA PROFESIONAL is a white gypsum-based mineral powder, pre-mixed with professional quality mineral admixtures and additives in order to ensure increased adhesion and plasticity. When combined with water, a homogeneous paste is obtained, with extended working time and superior workability.

AREAS OF USE

- ▶ NIDA Profesional is used for leveling and finishing joints between plasterboards. This material is applied using microperforated paper tape for spaces with low humidity, or using fiberglass felt tape for areas with fire resistance requirements or increased humidity.
- ▶ Due to its extended setting time, it is the perfect solution for applications on large building sites.

PERFORMANCES

Specific consumption

250 - 300 g/m²

Working time

80 minutes



BENEFITS



EASY TO
PREPARE AND
APPLY



PERFECT
JOINTING



EXTENDED WORKING
TIME
80 MINUTES



Redrawing of the jointing axis



Paste application



Tape application on contact with the paste



Removal of material excess and air pockets



Application of the second material layer



Application of the final layer

WORKING METHOD

The support must be dry, without dust and free of oil stains. The boards must be firmly fixed on the mounting profiles.

PREPARATION

NIDA Profesional is gradually dispersed in the clean water required for mixing.

Let the material in the vessel for approximately 3 minutes in order to allow time for hydration, then mix manually, so that the material will acquire the desired consistency to be used.

JOINTING OF PLASTERBOARDS

- ▶ Apply manually using the trowel, first applying the first layer of material in the joints, carefully pressing the material
- ▶ Using a spatula, press on the joint line between the boards, to allow the paste to penetrate inside the joint and to prevent any possible air pocket
- ▶ This avoids material tension inside the joint after hardening and drying
- ▶ Apply the tape by pressing with the spatula, and remove air pockets and paste excess from the joints
- ▶ After drying, apply the second layer of material, covering the tape and the differences in flatness
- ▶ Remove any excesses of material, then apply the finishing layer
- ▶ In order to obtain a high quality final layer, NIDA Pro should be used





NIDA Profesional Fresh

Jointing plaster

NIDA PROFESIONAL FRESH is a white gypsum-based mineral powder, pre-mixed with professional quality mineral admixtures and additives in order to ensure increased adhesion and plasticity. When combined with water, a homogeneous paste is obtained, with optimal working time, superior workability and lemon odor.

AREAS OF USE

- ▶ NIDA Profesional Fresh is used for leveling and finishing joints between plasterboards. This material is applied using microperforated paper tape for spaces with low humidity, or using fiberglass felt tape for the areas with fire resistance requirements or increased humidity
- ▶ Due to its reduced setting time, it is the perfect solution for applications on small building sites

PERFORMANCES

Specific consumption

8 kg/m²/cm

Working time

> 60 minutes



BENEFITS



EASY TO
PREPARE AND
APPLY



PERFECT
JOINTING



WORKING TIME
60 MINUTES



Redrawing of the jointing axis



Paste application



Tape application on contact with the paste



Removal of material excess and air pockets



Application of the second material layer



Application of the final layer

WORKING METHOD

The support must be dry, without dust and free of oil stains. The boards must be firmly fixed on the mounting profiles.

PREPARATION

- ▶ NIDA Profesional Fresh s gradually dispersed in the clean water required for mixing
- ▶ Let the material in the vessel for approximately 3 minutes in order to allow time for hydration, then mix manually, so that the material will acquire the desired consistency to be used

JOINTING OF PLASTERBOARDS

- ▶ Apply manually using the trowel, first applying the first layer of material in the joints, carefully pressing the material
- ▶ Using a spatula, press on the joint line between the boards, to allow the paste to penetrate inside the joint and to prevent any possible air pocket
- ▶ This avoids material tension inside the joint after hardening and drying
- ▶ Apply the tape by pressing with the spatula, and remove air pockets and paste excess from the joints
- ▶ After drying, apply the second layer of material, covering the tape and the differences in flatness
- ▶ Remove any excesses of material, then apply the finishing layer
- ▶ In order to obtain a high quality final layer, Nidareadymix Profesional should be used

RELATED PRODUCTS



Connect

ULTRAMODERN TAPE
for plasterboards joints



Comfort

ULTRAMODERN CORNER TAPE
For inner and outer plasterboard corners





Smart Top

Joint filler for plasterboards jointing and finishing

Smart Top is a white gypsum-based mineral powder, pre-mixed with professional quality mineral admixtures and additives in order to ensure increased adhesion and plasticity. When combined with water, a homogeneous paste is obtained, with extended working time and superior workability.

AREAS OF USE

- ▶ Smart Top is used for leveling and finishing joints between plasterboards.
- ▶ This material is applied using microperforated paper tape for spaces with low humidity, or using fiberglass felt tape for areas with fire resistance requirements or increased humidity
- ▶ Due to its optimal setting time, it is the perfect solution for applications on small building sites and for renovations

PERFORMANCES

Specific consumption

230-270 g/m²

Working time

60 minutes



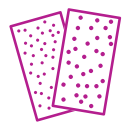
BENEFITS



EASY TO APPLY



INCREASED ADHESION AND PLASTICITY



EASY TO SAND



Redrawing of the jointing axis



Paste application



Tape application on contact with the paste



Removal of material excess and air pockets



Application of the second material layer



Application of the final layer

WORKING METHOD

The support must be dry, clean of dust, without oil stains. The boards must be firmly attached to the mounting profile.

PREPARATION

- ▶ Smart Top gradually disperses in the clean water required for mixing. Leave the material in the recipient for approximately 2-5 minutes to allow hydration, then mix it manually, until it has the desired consistency.

PLASTERBOARDS JOINTS

- ▶ Apply manually using the grouter, first for one layer, in the joints, pressing the material
- ▶ Trace with the spatula on the joint between the boards to allow the paste to penetrate inside it and prevent any air gaps
- ▶ Thus, it is avoided the pressure of the material inside the gap, after curing and drying.
- ▶ Apply the tape by pressing with the spatula to eliminate the air gaps and the excessive paste from the plasterboards joints.
- ▶ After drying, apply the second layer of material, covering the tape and flatness differences.
- ▶ Eliminate the excessive material, then apply the finishing layer
- ▶ To obtain a high quality final layer, use Nidareadymix Profesional.





NIDA Boardfix

Bonding compound

NIDA BOARDFIX is a powdered adhesive, pre-dosed with gypsum based mineral admixtures and additives of professional quality, characterized by increased adhesion and plasticity. In combination with water, a pink homogeneous paste is formed, with extended working time and possibility of prolonged flatness correction, representing the safest solution for the application of plasterboards which are directly bound to the support.

AREAS OF USE

- ▶ For the execution of plasterboard claddings on surfaces made of ACC blocks, bricks, concrete, plastering (cement, lime-cement, gypsum)
- ▶ For bonding together insulating panels, cracks repair or filling of joints with thicknesses larger than 3 mm
- ▶ The support must be dry, without dust and free of oil stains, fading or brittle areas
- ▶ The support will be primed in the bonding points

PERFORMANCES

Specific consumption

3,5 kg/m²

Working time

70 minutes



BENEFITS



VERY GOOD
ADHESION ON
SUPPORT



HIGH MECHANICAL
RESISTANCE



LONG WORKING
TIME



PREPARATION



MIXING



APPLICATION

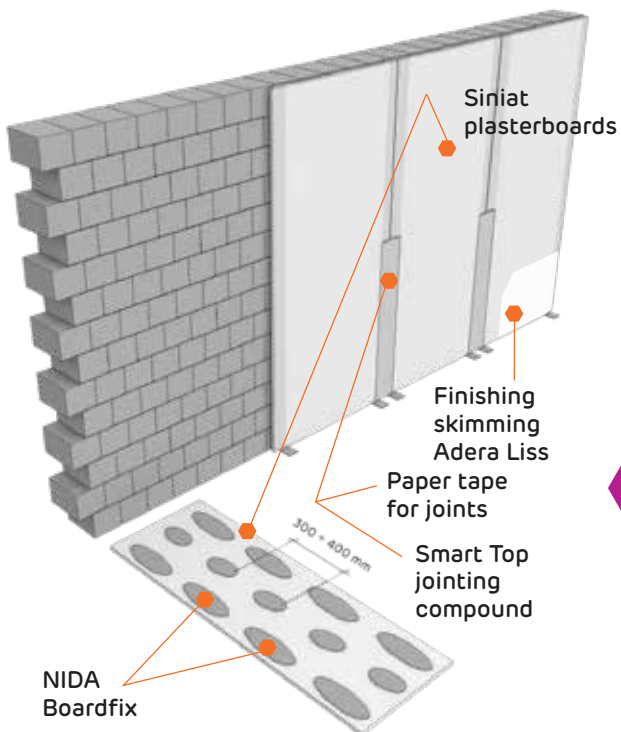
WORKING METHOD

PREPARATION

- ▶ NIDA Boardfix is gradually dispersed in the clean water required for the mixture, then it is manually or mechanically mixed until the complete homogenization of the paste

APPLICATION

- ▶ Before placing the adhesive, check the support flatness beforehand; the opening between the support and the plasterboard should be minimum 5 mm and maximum 25 mm in order to obtain the necessary cohesion
- ▶ The first step consists in lining out the future surface contour by means of the lead thread, measuring tape and oxide thread. Apply the adhesive cakes on the back of the board, disposed in 10 points per square meter, with a diameter of 10 cm, at distances of 30 cm on the board width and 40 cm on the board length
- ▶ After completing the material application, fix the board on 2 spacers of 1 cm, which will support the board on the mounting. Then fix the board to the support for bonding, taking care to obtain a continuous surface
- ▶ The flatness is acquired and corrected by means of the straight edge by pressing and slightly tapping the board vertically, horizontally and diagonally



DISTRIBUTION SERVICES

We offer SINIAT partners excellence in delivery quality, from order confirmation to invoicing:

- ▶ permanent information on order status - order confirmation, cargo loading confirmation by SMS, prompt delivery of related documents.
- ▶ competitive logistics services - delivery of orders containing stock products in 48 hours to the entire Romanian distributor network
- ▶ customized deliveries on SINIAT partners' sites
- ▶ designated person for supply chain services
- ▶ SINIAT products perfect packaging



ORDERS PROCESSING

The centralized order taking service is available from Monday to Friday, 9 am - 5 pm.

Send the orders by email cs_etexbp@etexgroup.com or use the **Webshop** app.

Order confirmation, with details on stock availability, shall be sent within 24 hours from order receipt

To avoid orders delay please:

- ▶ Send your order to e-mail address: cs_etexbp@etexgroup.com
- ▶ Send all necessary information for delivery: full address, name and telephone number of the person designated to receive the goods, unloading schedule
- ▶ Verify the order confirmation

For further details, the Customer Service department is at your service.

CONTACT DETAILS FOR ORDERS

Moldova, Oltenia region:

Mobil: 0745 124 991

Muntenia, Dobrogea region:

Mobil: 0744 359 810

Transilvania, Banat region:

Mobil: 0742 156 812

ORDER LOADING CONFIRMATION BY SMS

The order loading shall be confirmed by a SMS sent to your mobile phone number.

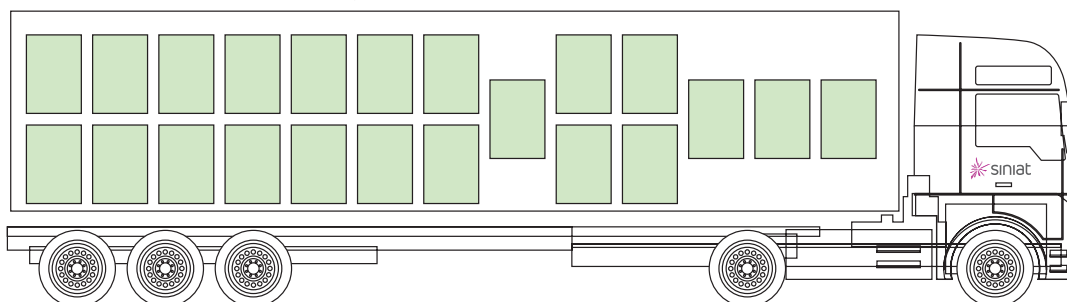
The SMS is sent when the cargo loading notice is issued.



LOGISTICS DATA ON TRUCK LOADING

Product			UM	Package	No of pallets/truck
ADERA Basic	building plaster	bag 25 Kg	kg	pallet	19
ADERA Stucco	modelling plaster	bag 25 Kg	kg	pallet	19
ADERA Finna	finishing plaster	bag 20 Kg	kg	pallet	21
ADERA Strato	monolayer mortar	bag 25 Kg	kg	pallet	22
ADERA Liss	finishing plaster	bag 20 Kg	kg	pallet	21
ADERA Plano	levelling compound	bag 20 Kg	kg	pallet	21
NIDA Profesional	joint compound	bag 25 Kg	kg	pallet	19
NIDA Boardfix	bonding compound	bag 25 Kg	kg	pallet	19

LOADING: 22 PALLETS/TRUCK





Etex Building Performance S.A.

For more details and info use

www.siniat.ro

 [/siniat.romania](https://www.facebook.com/siniat.romania)

 [@siniatromania](https://www.instagram.com/siniatromania)

 [Siniat Romania](https://www.youtube.com/SiniatRomania)